

Board of Trustees Meeting

December 12, 2025



Major Awards by Faculty Last Four Months

| Name | Professor of | College/University | Award |
|-------------------|--------------------------------------------|-------------------------|----------------------------------------------------------------------------------------------------------------------------------------------------------------|
| Kingsly Ambrose | Agricultural & Biological Engineering | College of Agriculture | SMV Technologies Ergonomics, Safety and Health Award; American Society of Agricultural and Biological Engineers |
| Shawn Bauldry | Sociology | College of Liberal Arts | Member, Sociological Research Association |
| Arun Bhunia | Food Science | College of Agriculture | Fulbright Scholar, U.S. Department of State |
| Shannon Bischoff | Communication Sciences and Disorders | Purdue Fort Wayne | Co-Chair on Rights Education Among Indigenous and Non-Dominant Language Communities; United Nations Educational, Scientific and Cultural Organization (UNESCO) |
| Sylvie Brouder | Agronomy | College of Agriculture | Distinguished Service Award, American Society of Agronomy |
| Sylvie Brouder | Agronomy | College of Agriculture | Fellow, Soil Science Society of America |
| Ignacio Ciampitti | Agronomy | College of Agriculture | Fellow, Crop Science Society of America |
| Daniel Cziczo | Earth, Atmospheric, and Planetary Sciences | College of Science | Fellow, American Geophysical Union |

Major Awards by Faculty

| Name | Professor of | College/University | Award |
|----------------------|-------------------------------------------------------|----------------------------|----------------------------------------------------------------------------------------------------------------------------------------------------------------|
| Mary Encabo-Bischoff | Human Services | Purdue Fort Wayne | Co-Chair on Rights Education Among Indigenous and Non-Dominant Language Communities; United Nations Educational, Scientific and Cultural Organization (UNESCO) |
| Robert Frosch | Civil Engineering | College of Engineering | Charles S. Whitney Medal, American Concrete Institute |
| Allison Gabriel | Organizational Behavior and Human Resource Management | Daniels School of Business | Fellow, American Psychological Association |
| Alex N. Isaacs | Pharmacy Practice | College of Pharmacy | Fellow, American College of Clinical Pharmacy |
| Rakhi Karwa | Pharmacy Practice | College of Pharmacy | Fellow, American College of Clinical Pharmacy |
| Charles Kenley | Industrial Engineering | College of Engineering | Founder's Award, International Council on Systems Engineering |
| Nicole Key | Mechanical Engineering | College of Engineering | Ground Testing Award, American Institute of Aeronautics and Astronautics |
| Philip Low | Chemistry | College of Science | Alfred Burger Award in Medicinal Chemistry, American Chemical Society |

Major Awards by Faculty

| Name | Professor of | College/University | Award |
|-----------------|------------------------------------------------|------------------------|-------------------------------------------------------------------------------------------------------------------|
| Robert Lucht | Mechanical Engineering | College of Engineering | Wyld Propulsion Award, American Institute of Aeronautics and Astronautics |
| Anne Lucietto | Engineering Technology | Purdue Polytechnic | Distinguished Engineering Educator Award, Society of Women Engineers |
| Michael Manfra | Physics and Astronomy | College of Science | Oliver E. Buckley Condensed Matter Physics Prize, American Physical Society |
| Scott McLuckey | Chemistry | College of Science | Ralph N. Adams Award in Bioanalytical Chemistry, University of Kansas and Pittcon |
| Irith Pomeranz | Electrical and Computer Engineering | College of Engineering | Lifetime Contribution Medal; Institute of Electrical and Electronics Engineers, Test Technology Technical Council |
| Carol Post | Medicinal Chemistry and Molecular Pharmacology | College of Science | Fellow, The Protein Society |
| Tabb Prissel | Earth, Atmospheric, and Planetary Sciences | College of Science | NASA Susan Mahan Niebur Award, NASA Solar System Exploration Research Virtual Institute |
| Caitlin Proctor | Agricultural & Biological Engineering | College of Agriculture | Faculty Early Career Development (CAREER) Program, National Science Foundation |

Major Awards by Faculty

| Name | Professor of | College/University | Award |
|-------------------|------------------------|--------------------------------------|---------------------------------------------------------------------------------------------------------------|
| Laura Pyrak-Nolte | Physics and Astronomy | College of Science | Fellow, International Society for Rock Mechanics and Rock Engineering |
| Natalia Rodriguez | Public Health | College of Health and Human Sciences | Ayman El-Mohandes Young Professional Award, American Public Health Association |
| Yu She | Industrial Engineering | College of Engineering | Freudenstein Young Investigator Award, American Society of Mechanical Engineers |
| Ronald Turco | Agronomy | College of Agriculture | Fellow, Soil Science Society of America |
| Christopher Uyeda | Chemistry | College of Science | Arthur C. Cope Scholar Award, American Chemical Society |
| Valentin Walther | Chemistry | College of Science | Early Career Research Award, U.S. Department of Energy |
| David Warsinger | Mechanical Engineering | College of Engineering | Early Investigator Award; American Chemical Society, Division of Polymeric Materials: Science and Engineering |
| Qi Zhou | Physics and Astronomy | College of Science | Fellow, American Physical Society |

Resolutions of Appreciation

| Bob, Terry, Doug and Julie Bowen Purdue Polytechnic Institute | \$10M |
|-------------------------------------------------------------------------------------------|--------------------|
| Richard and Marni Waterfield Environmental Resources Center — Purdue Fort Wayne | \$2M |
| Brian and Irene Binash Mitch Daniels School of Business | \$1M |
| Nathan and Beth Gabhart Mitch Daniels School of Business | \$1M |
| Anonymous Intercollegiate Athletics | \$1M |
| David Byers Purdue Polytechnic Institute and Intercollegiate Athletics | Undisclosed |

Resolutions of Appreciation

| Geoff and Kate Cubitt College of Engineering | Undisclosed |
|---------------------------------------------------------------------------------------------|-------------|
| Hayes Family Foundation Mitch Daniels School of Business | Undisclosed |
| Young Future Foundation College of Agriculture & Mitch Daniels School of Business | Undisclosed |
| Anonymous Intercollegiate Athletics | Undisclosed |

Naming

- Request to name the Bowen School of Construction within the Purdue Polytechnic Institute
 - Donors are Bob, Terry, Doug and Julie Bowen



Namings

- Request to name Room 213 of the future Mitch Daniels School of Business building the Allen Family Innovation Lab and Integrated Business and Engineering Lab
 - Donors are Dr. Sam and Marsha Allen
- Request to name the Dean's Suite, Room 550, of the future Mitch Daniels School of Business building the Nathan and Beth Gabhart Dean's Suite
 - Donors are Nathan and Beth Gabhart
- Request to name the tribute area in the future Mitch Daniels School of Business building the Brian and Irene Hoysan Binash Atrium
 - Donors are Brian and Irene Binash
- Request to name Room 3055 in the future Nursing and Pharmacy Education Building for Kenneth and Mary Lou Dunbar
 - Donors are Kenneth and Mary Lou Dunbar



Namings

- Request to name the Environmental Resources Center (ERC) at Purdue Fort Wayne the Waterfield Environmental Resources Center
 - Donors are Richard and Marni Waterfield
- Request to name the David R. Byers Professorship in Aviation
 - Donor is David Byers
- Request to name the Cubitt Professor within the Edwardson School of Industrial Engineering
 - Donors are Geoff and Kate Cubitt



AI@Purdue

Learning, Researching, Using AI



Learning about AI – Competency Requirements

- Goal: *Ensure that, informed by workforce and employer needs, our students possess the requisite critical thinking skills to understand, evaluate and effectively use AI technologies and to keep pace with their future changes*
- From exposure and awareness to skill-building and problem-solving mastery, Purdue students will possess job-ready skills and critical thinking competencies to:
 - 1) Understand and use the latest AI tools effectively in their chosen field(s)
 - Including identifying the key capabilities, strengths and limits of AI technologies and ways that AI can transform existing methods, processes and tools
 - 2) Recognize and communicate clearly about AI use, decisions and limitations
 - Including developing and defending decisions informed by AI-driven insights and recognizing the presence, influence and consequences of AI in decision-making
 - 3) Adapt to and work with future AI developments effectively and continually

Learning with AI – Upcoming Policy Updates

Purdue provides evidence-based guidance to support faculty and students in responsible AI integration into teaching and learning with resources updated regularly as technology and practices evolve.

Faculty and students are encouraged to innovate collaboratively with AI while maintaining alignment with Purdue's institutional values and policies; equivalent student-focused guidance is in development.

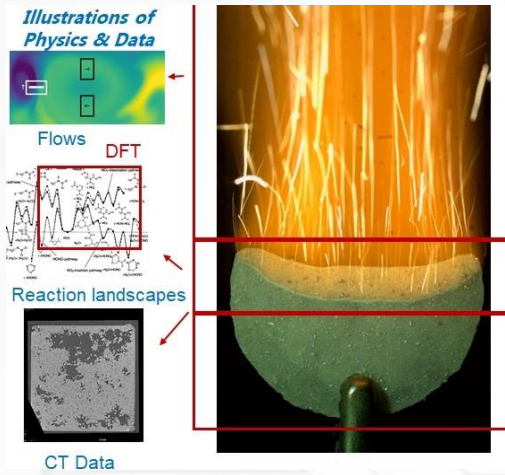
Resources for instructors and students include:

- AI Teaching and Learning resources
- Relevant policies and regulations
- Syllabus language
- Instructional team roles and responsibilities, grading
- Use of AI detection
- Copyright issues
- FERPA and other privacy issues

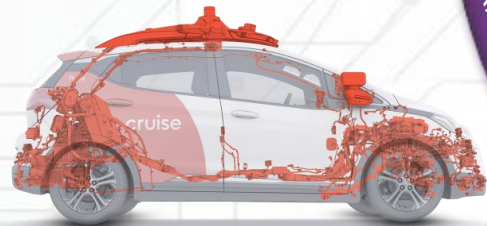
Purdue is expanding secure, technology-based teaching and learning environments for AI use with copyrighted and FERPA-protected materials.

Initial classroom usage policy implemented 2024; update process will be carried out in Spring 2026.

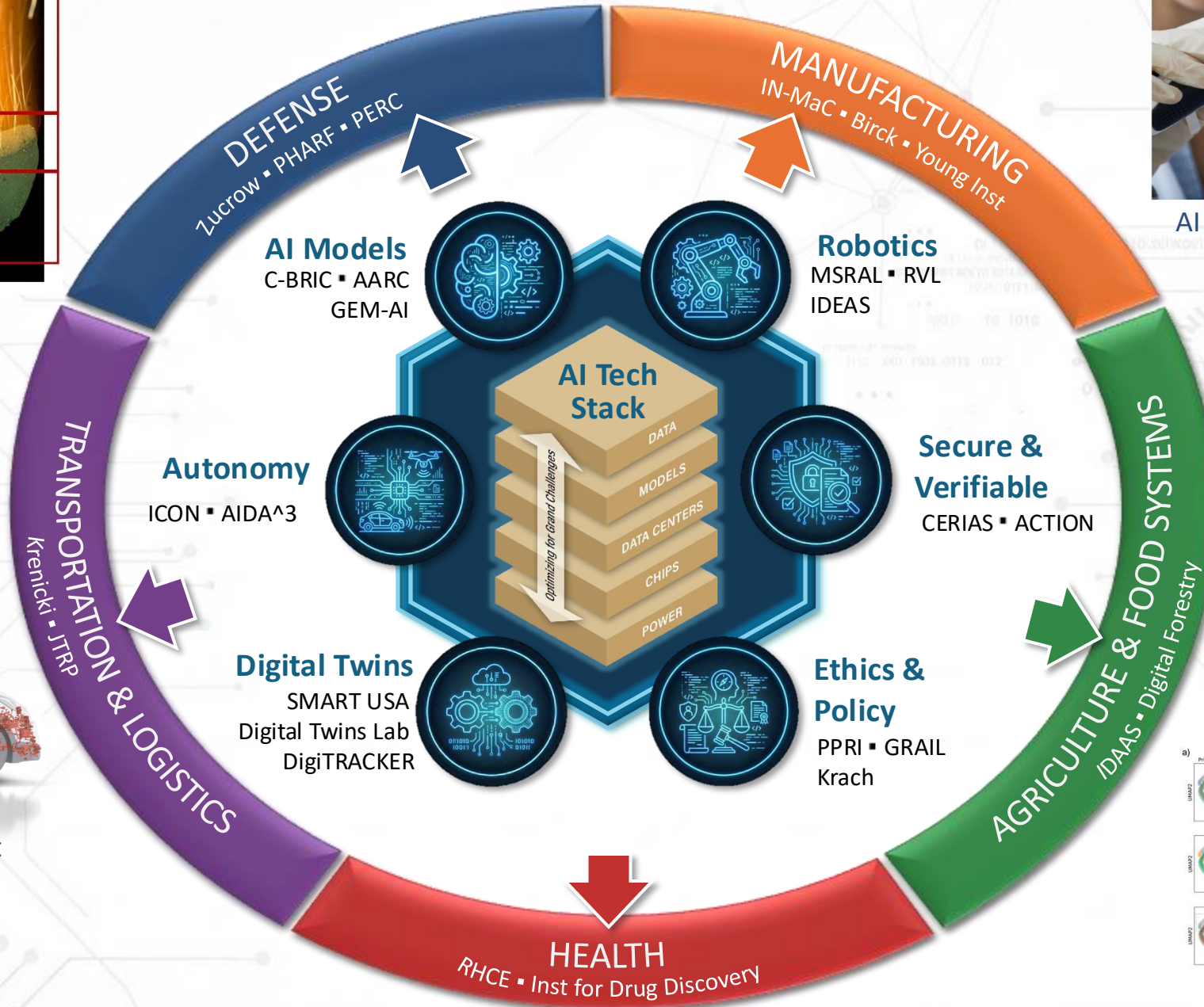
Researching with AI



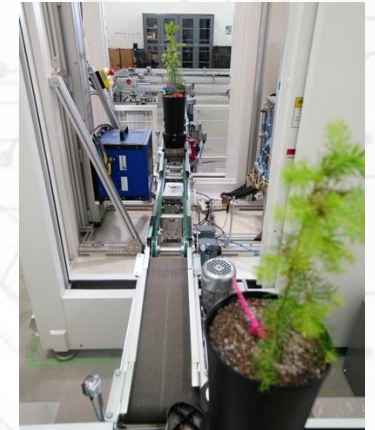
Design and Optimization of Energetic Materials



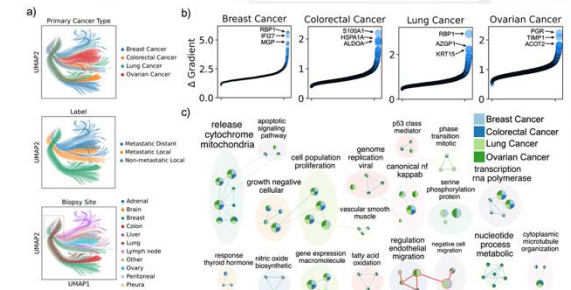
Autonomous Personnel and Commercial Transport



AI for Secure Manufacturing


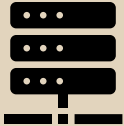





AI-Driven Precision Agriculture and Phenotyping



Precision Digital Health

Using AI

| Productivity AI | High Performance Computing | Cybersecurity | Policy | Opportunities |
|-----------------------------------------------------------------------------------------------------------------------------------------------------------------------------------------------------------------------------------------------------------------------------------------------------------------------------------------------------------------------------------------------------------------------------------|---------------------------------------------------------------------------------------------------------------------------------------------------------------------------------------------------------------------------------------------------------------------------------------------------------------------------------------------------------------------------------------------|--------------------------------------------------------------------------------------------------------------------------------------------------------------------------------------------------------------------------------------------------------------------------------------------------------------------------------|-------------------------------------------------------------------------------------------------------------------------------------------------------------------------------------------------------------------------------------------------------------------------------------------------------------------------------------------------------|-------------------------------------------------------------------------------------------------------------------------------------------------------------------------------------------------------------------------------------------------------------------------------------------------------------------------------------------------------------------------------------------------------------------------------------------------------------|
| <p><i>Increased Copilot 365 licenses from 200 to 1,000 in September 2025 with 75% utilization</i></p> <p>GenAI Studio - Over 300 active users (2200+ all-time), ~6.8K chats, and 1.5M+ messages as of November 2025</p> <p><i>~18 bots automated ~1.3M transactions, IT, HR, Bursar, Student Life chatbots performed ~75k chats</i></p>  | <p><i>Gautschi supported 36 PIs, and 173 unique users, 260K GPU hours</i></p> <p>Without Gautschi, this quarter's usage would have cost Purdue \$3.3M on the commercial cloud</p> <p>36 PIs from 16 departments have purchased allocations</p> <p>New world-ranking in I/O 500 (storage performance)</p>  | <p>Rapid7's use of and ongoing investment in AI continues to enhance Purdue's security posture via effectiveness and automation</p> <p>Enhanced Mean Time to Respond from days/weeks to ~7 minutes in Nov. for critical alerts</p>  | <p>Information, Governance, and Training Offerings</p> <p>AI ethics, implementation and data governance standards published Nov. 2025</p> <p>AI Literacy Training launched Oct. 2025</p> <p>12 AI research trainings held, reaching over 500 students</p>  | <p>Agentforce: Pilot with Salesforce in progress</p> <p>Google partnership</p> <p>Scaling chatbots across the university (14 use cases, 5 in process w/FY26 Q3 go-live)</p> <p>SOAR: AI-augmented workflow creation using natural language prompt</p> <p>Partnering w/ Brand Studio for a broader <u>Purdue AI</u> web presence</p>  |

Partnering in AI

Harnessing partnerships to unlock transformative impact in education and research

- **Purdue - Google**

“We aim to expand Google and Purdue’s partnership and place AI in the hands of every student, faculty and staff member, as well as at the core of curriculum,” Karen Dahut, CEO of Google Public Sector, 11/13/2025

- **Purdue - Apple**

Purdue unveiled a first-of-its-kind Spatial Computing Hub, in collaboration with Apple, 9/23/2025

- **Purdue - Arm**

Purdue’s SCALE programs will prepare youth for tech careers through a new Arm partnership launching the Arm EducateAI Coalition, 9/5/2025



Mung Chiang and Karen Dahut at the
2025 Google-Purdue AI Summit



Unveiling of the Spatial
Computing Hub

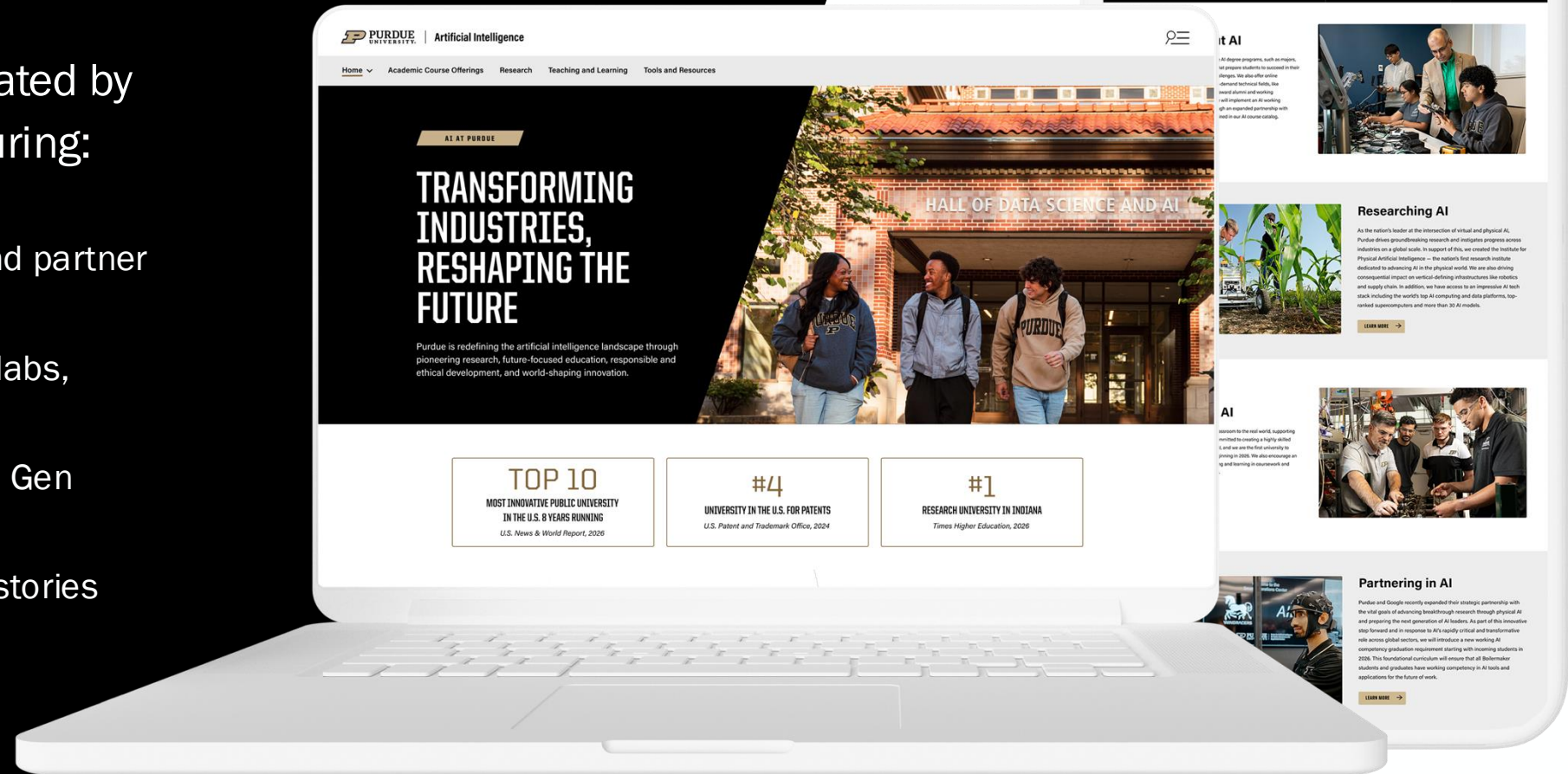


Purdue SCALE K-12 program partners
with Arm in EducateAI Coalition

A Front Door to All Things AI@Purdue

A new web experience created by Purdue Brand Studio featuring:

- Options to learn, research and partner with AI
- IT governance, facilities and labs, toolkits, and guidance
- An AI playbook for Gen Z and Gen Alpha students
- The latest Purdue news and stories focused on AI



Thank you

